



The Week Ahead

Partner Event: Discovery Center Happy Hour

LandHealth Institute partner, [Audubon Mid-Atlantic](#), is excited to announce their first happy hour series featuring Brewers for the Delaware River and community partners, where Scott Quitel will be a panelist. Join us at the [Discovery Center](#) to learn more about the connection between water, beer and birds!

Making up at least 90 percent of beer, water is an essential ingredient that gives each brew a uniqueness that depends on the quality of the water in each local community. Brewers for the Delaware River took shape under a shared concern of preserving a steady supply of clean water from the Delaware River Watershed, which provides drinking water for more than 13 million Americans across Delaware, New Jersey, New York and Pennsylvania.

Fee: Advance registration required (Free for 19121 residents, \$25 all others). All proceeds from the event will support the [Brewers for the Delaware](#) initiative.

Location: The Discovery Center (3401 Reservoir Dr, Philadelphia, PA 19121)

Date/Time: Wednesday, 7/28, 6:00-7:30 PM

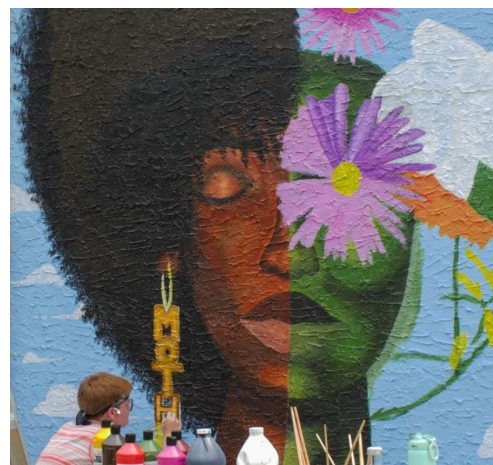


Blog: Abandoned Lot Revitalization at the LandHealth Nursery

Outside of the gates of the LandHealth Native Plant Nursery sits an abandoned lot. Since the late spring of 2021, we have been developing it into a small community garden with a mural. And with the help of everyone at LandHealth, the site is almost finished and will be fully open for public use in the coming weeks.

Read the full blog post, "Abandoned Lot Revitalization at the LandHealth Nursery" on our blog page on Monday!

Also check out last week's blog post, '[Watershed Citizenship: Exploring my Backyard Watershed](#)'



Recent Event: Fidler Square Farmer's Market

This past Saturday, LandHealth Institute had a table at the Fidler Square Farmer's Market. We were able to sell some of our beautiful native plants. Learn more about our Native Plant nursery [here](#). Come visit us on one of our upcoming Farmer's Market dates: 8/28, 9/25, and 10/23!



Student Program: Glen Foerd Water Stewards

Last week, our Native Plant Nursery Manager, Steve Jones, visited Glen Foerd to help a group of Water Stewards install a garden of native plants. The students spent Tuesday and Thursday mornings pulling out weeds, raking the area to prepare for the new plants, and planting natives on a slope on the Glen Foerd grounds. This was a great place to talk about different moisture and shade preferences between plants, since some areas were much sunnier than others and the bottom of the slope was much wetter than areas higher up. They used this new knowledge to begin installing the garden and placed each plant in a spot to match its preferences. We're looking forward to more fun planting sessions this week to finish this native garden!



Student Program: Program for Future Environmental Scientists and Stewards (ProFESS)

This week ProFESS Watershed Stewards spent the day at LandHealth Institute's Plant Nursery learning about native plants. They practiced plant ID skills in a scavenger hunt around the shade houses, stopped by our mural in progress to talk about ways to bring people and nature together, and took a walk around Concourse lake.



Interested in supporting LandHealth? We welcome you to do that [here](#)! For information on LandHealth membership, please visit us [here](#)!



